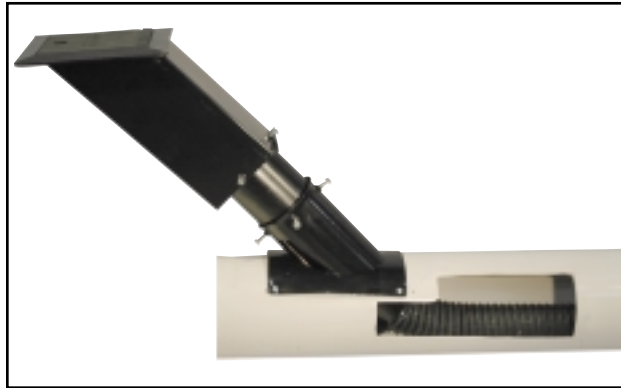


New from EuroVent, the leading manufacturer of "Overhead Rail-Type" Exhaust Systems is the "Saddle-Style" Disappearing Underground Exhaust System.

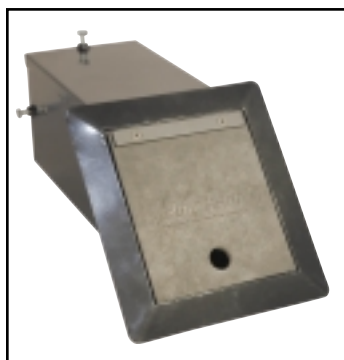


Three-Piece telescoping design provides up to 5" of adjustability, making installation easier and faster.

- Telescoping design makes final adjustments much easier.
- Makes exhaust duct depth less critical.
- Eliminates need for additional extension pieces.
- Flared connections allow the hose to slide smoothly.
- Oblong mounting holes on saddle allow for horizontal adjustment.

Three-Step Finishing Process for Superior Corrosion Protection.

- Phosphate base coat on all metal parts.
- Electro-coat primer penetrates all surfaces and seams.
- Powder-coat top coat provides a durable finish.



Patented Rubber Door Design

- 3mm internal steel plate is encapsulated in rubber.
- No moving parts.
- 180° opening.
- Corrosion- and oil-resistant.
- Easily replaceable.

Complete Underground Systems

Each system comes complete with 3-piece floor assembly, 8' Crushproof Exhaust Hose, Tailpipe Adapter and Hose Insertion Guide

Systems:

No. EVU-3

3" Complete Underground System (includes 3" x 8' Crushproof Hose)

No. EVU-4

4" Complete Underground System (includes 4" x 8' Crushproof Hose)

Components:

No. EVUD-1

Replacement Door

No. EVCP-83

3" x 8' Crushproof Hose

No. EVCP-84

4" x 8' Crushproof Hose

No. EVIG-1

Hose Insertion Guide

No. EV-350

3" Tailpipe Adapter

No. EV-450

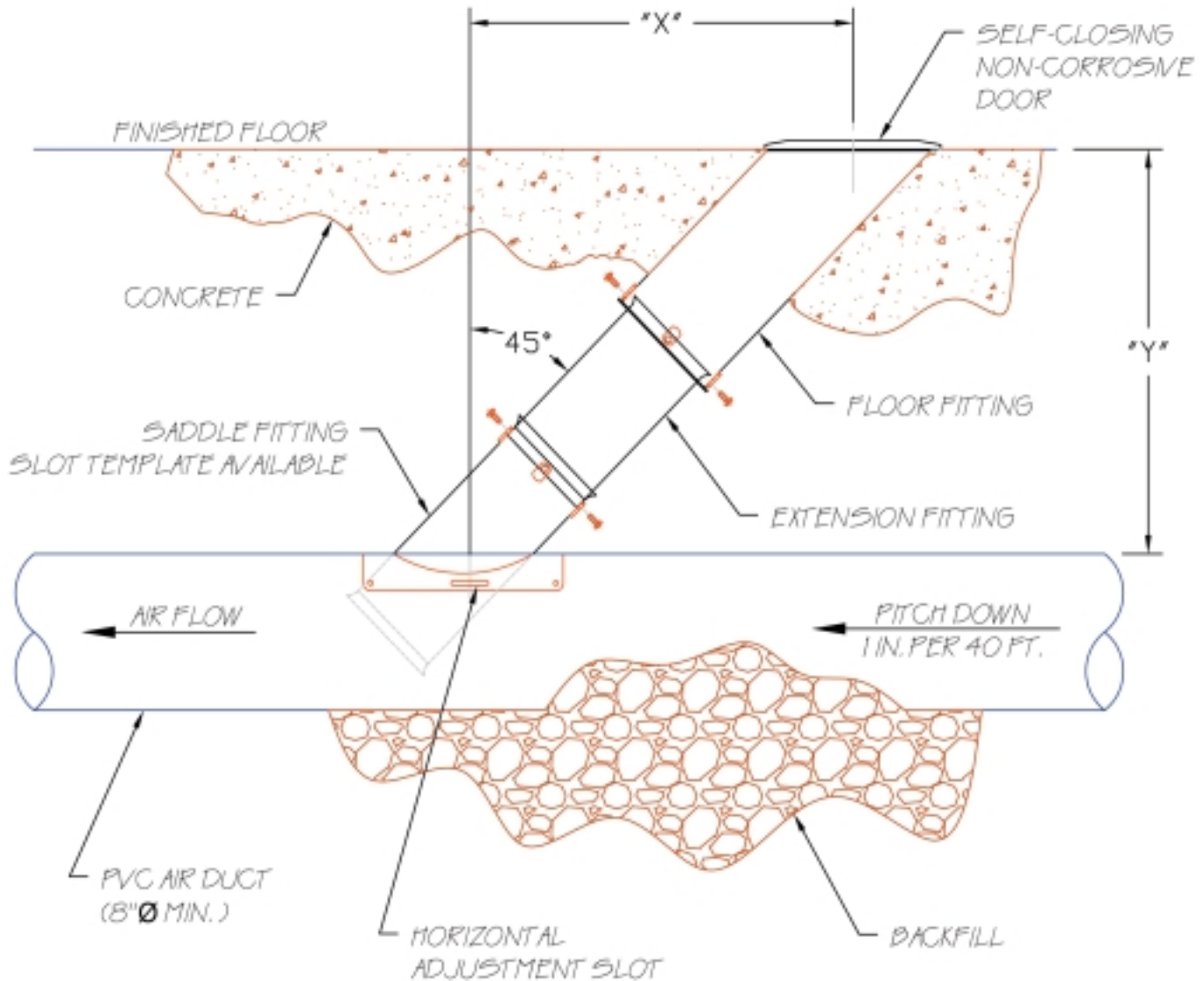
4" Tailpipe Adapter



IN-GROUND EXHAUST REMOVAL ASSEMBLY BY EUROVENT®

NOTE:

DIMENSION "X" EQUALS DIMENSION "Y" (APPROX).
 VERTICAL ADJUSTMENT CAPACITY FROM 15" MIN. TO 20" MAX.
 ASSEMBLY CAPABLE OF ACCEPTING 3" Ø OR 4" Ø EXHAUST HOSE



- EQUIPMENT SUPPLIED BY EUROVENT:
 IN-GROUND 3-PIECE ASSEMBLY
 FAN AND MOTOR ASSEMBLY
 3" Ø OR 4" Ø CRUSH-PROOF HOSE
 METAL HOSE GUIDE
 3" Ø OR 4" Ø TAIL-PIPE ADAPTER
 ASSEMBLY AND INSTALLATION BY OTHERS
 ALL ELECTRICAL MATERIALS AND LABOR BY OTHERS

EuroVent®
Vehicle Exhaust Extraction

By **JohnDow** Industries

151 Snyder Ave.
 Barberton, OH 44203
 Phone: 1-800-433-0708
 Fax: 1-330-753-6419