



EuroVent Universal Ceiling Bracket

The new EuroVent Universal Ceiling Bracket has been designed to provide both flexibility and maximum savings in installation time and labor costs. These products are much more affordable than conventional Unistrut products, but are just as versatile. Now brackets can easily be “customized” on the job, saving valuable time and money.

For optimum security, one bracket should be used at least every 13’ when mounting any EuroVent Rail Exhaust System.

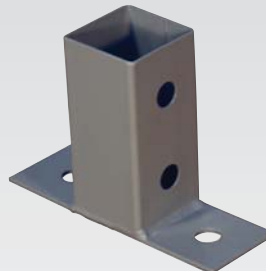
Adjustable Ceiling Bracket No. CB-CMA



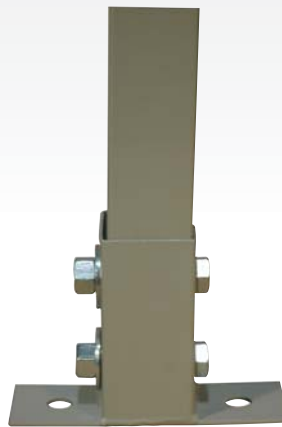
This allows for mounting on angles up to 30°. Simply clamp or bolt the bracket to any surface and secure the Mounting Tube. 6" x 6" mounting plate.



Rail Mount Ceiling Bracket No. CB-RM



Designed for use with the “rail bolts” provided. Mounts directly to the top of the EuroVent Rail. 6" x 2" mounting plate.



60" Straight Mounting Tube No. CB-T60



This 5' square tube has mounting holes at both ends. Can be cut to length or extended for longer applications.

***For More Information On
This Or Any EuroVent Product,
Call Us Toll-Free At
1.800.433.0708***

Mounting Tube Connector No. CB-TC

Makes extending the Mounting Tube quick & easy.



Performance, Reliability, Commitment.

151 Snyder Avenue
Barberton, Ohio 44203
Toll-Free Phone: 800.433.0708
Fax: 330-753-6419
Web: www.johndow.com
E-mail: customerservice@johndow.com